

Central
Bedfordshire

great
prospects



Central Bedfordshire Youth Support Service Annual Report 2015 - 2016

A great place to live and work.

Find us online  www.centralbedfordshire.gov.uk/youthsupport  @CBYouthVoice

Welcome to the second annual report of the Central Bedfordshire Youth Support Services (YSS). The past 12 months have had many successes, including overseeing a significant reduction in young people who are not in education, employment and training (NEET), delivery of high quality support for those with complex needs and securing the active participation of young people across a number of projects. We have also begun to embed our provision to ensure we consistently deliver more positive outcomes for those who need our services the most.

Our report sets out what we have delivered over the past financial year, how we have made a difference and where we need to prioritise in the future. The YSS will inevitably have to manage changes in policy and meet financial challenges for the foreseeable future. We will continue to meet these challenges, seek new opportunities as part of the children services transformation programme and continue to place young people at the heart of everything we do.

We look forward to working with you over the coming year!

Our Aspiration

The Youth Support Service supports young people to achieve their potential. It works to ensure the needs and wishes of young people are heard, represented and they are empowered to achieve personal, social and economic success.

Our Responsibilities to Young People

The Youth Support Service manages the day to day co-ordination and delivery of our statutory 'Youth Offer' for young people aged 13-19 in Central Bedfordshire. We also support those leaving care up to the age of 21 and those with disabilities up to 25. Our Youth Offer makes a direct contribution to the key strategic priorities of Central Bedfordshire, including

- Young people will be supported to **learn** and improve their **educational attainment**, make progress and achieve their goals. They will have appropriate knowledge and skills to enter and succeed in their careers
- We will **help to protect vulnerable young people**. They will feel safer and are happier as a result of the intervention they receive
- Young people will have higher aspirations that are supported by their families. They will be offered a range of services, including **early help and support to improve their life chances**
- Young people will be more positive and feel more **emotionally and physically healthy**. With support, they will be able to make informed choices and understand the impact of the risks they take

All delivery is underpinned by the following statutory legislation and guidance:

- Education and Inspections Act (2006)
- Education and Skills Act (2008)
- Education Act (1996, 1997 & 2011)
- Positive for Youth (2010 & 2012)
- Crime and Disorder Act (1998)
- The Children and Families Act (2014)
- Safeguarding – Working Together (2015)

Our Principles

The following principles underpin planning and delivery from the Youth Support Service:

- Our provision always seeks to promote the voice of young people
- Our delivery is based on consent from young people and built around developing high quality professional relationships
- We promote the welfare of young people and protect them from harm
- Our practice is planned and delivered in line with an evidence of 'need' and 'what works'
- Our delivery is impartial and considers the range of opportunities available for young people that best meet their needs
- Our delivery is supported by appropriate processes and systems required to support young people with complex needs – including robust case management, resource allocation based on need and regular supervision
- We aim to work flexibly, holistically and collaboratively with a range of partners

Our Delivery

The Youth Support Service both secures and directly provides intervention and support to young people aged 13-19 and for those up to age 25 with Special Educational Needs and Disabilities (SEND). Our delivery comprises the following interlinked strands both directly delivered within the service and with our partners – including young people, schools and the voluntary/community sector:

Community Youth Support and Quality Assurance

We manage the contracts for a range of youth support, including youth work, Impartial Information, Advice and Guidance (IIAG), volunteering and learning opportunities. This includes identifying evidence of need, establishing the quality of services and monitoring the impact of provision. We also manage the re-design and procurement of provision as well as managing our youth centres. Our services are delivered by Groundwork, 4YP, the CVS and Princes Trust.

Engagement and Tracking

We have an in house team that identifies and tracks the progress of young people into Post-16 education, employment and training. This includes putting in place a number of interventions to proactively re-engage young people who are not in education, employment or training (NEET) – including the delivery of IIAG and signposting to local services that would help secure their participation. We also provide detailed management information on NEET performance and on young people via management of our Client Caseload Management Information System (CCIS).

Youth Participation

We facilitate the work of our elected Youth Parliament and other youth voice initiatives – including partnerships with the Children's Trust Board, Healthwatch and Bedfordshire Police. This includes support for our young commissioners as well as oversight of the Central Bedfordshire youth audit process. Our two qualified youth workers also play a central role in assessing the quality of youth work practice and support to establish a consistent standard of provision across the authority.

14-19 Partnerships

We build close partnerships with academies and schools to ensure that young people have the information they need to make informed decisions about their future in education, employment and training. This includes support to ensure high quality delivery of careers education, IAG as well as working with local businesses to identify opportunities. We also play a central role in ensuring young people know what is available - including Apprenticeships and Traineeships.

Impartial Information, Advice and Guidance for Young People with Complex Needs

We proactively work to engage and empower young people with complex needs to enable them to overcome significant barriers to education, employment and training. This includes person centred work, delivery of tailored IAG and support for planning their transitions into adulthood. The key focus of this work is on groups of more vulnerable young people – including looked after children and care leavers, young people with special education needs and disabilities (SEND), those in the criminal justice system and young people experiencing homelessness.

Bedfordshire Youth Offending Service

The Bedfordshire Youth Offending Service (BYOS) is a multi-agency team hosted by Bedford Borough Council. It is a shared service with Bedford Borough Council and our role is to manage the service level agreement for the local authority. The service works to ensure it achieves the following:

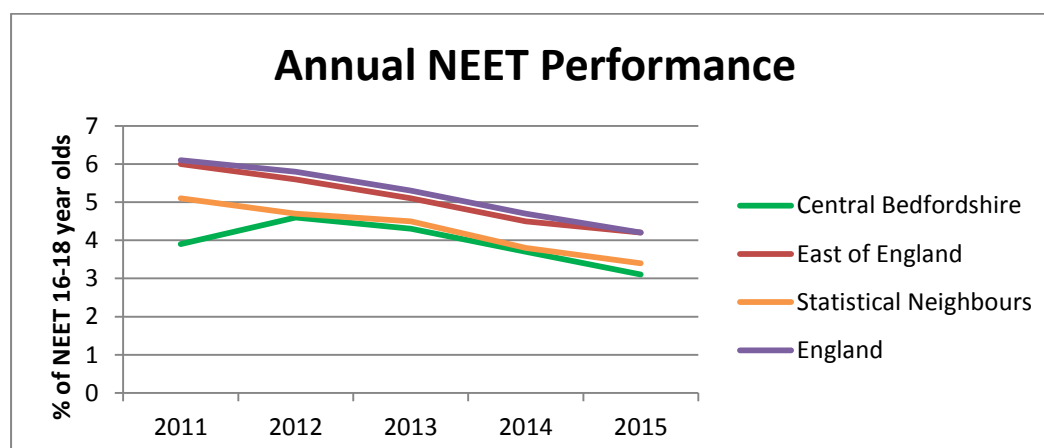
- Work with the courts and magistrates to ensure appropriate use of remand for young people and ongoing care for those with looked after status
- Assessment, Planning Interventions and Supervision (APIS) to support behaviour change amongst individual young people
- Triage and earlier intervention to prevent first time entrants to the criminal justice system
- Collaborative work to safeguard and promote the welfare of young people, particularly those at risk of child sexual exploitation
- Integrated resettlement activity to support reintegration of young people released from custody
- Wrap around services, including drugs/alcohol interventions, access to mental health provision and education, training and employment
- Group interventions around specific programmes, including knife crime and violence

Our Year in Numbers – Highlights:

Participation in Education, Employment and Training

- Central Bedfordshire reported an average of **3.1% or 270 young people who were NEET** in 2015 (in 2014 the figure was 3.7%). This was lower than the national (4.2%), regional (4.2%) and statistical neighbour (3.4%) averages and placed Central Bedfordshire in the top 25% of local authorities

- The overall percentage of young people who are NEET in Central Bedfordshire continues to fall year on year – as shown in the table below:



- Central Bedfordshire reported an average of **6.5%** or 571 young people whose engagement in education, employment and training was ‘not known’ in 2015 (in 2014 this figure was 7.8%). This was considerably lower than both the national average (8.4%) and statistical neighbour average (9.5%)
- **5,673** (91.6%) of young people, aged 16 and 17 years, were confirmed as having an offer of learning and continuing in education, an apprenticeship or employment with accredited training. This was an increase of **0.2%** compared to 2014
- In March 2016, Central Bedfordshire reported that **92.0% of all 16 and 17 year olds were participating in education, employment or training**. This was higher than the national (91.5%), regional (91.7%) and statistical neighbour (91.7%) averages. The participation rate in Central Bedfordshire had increased by 1.2% compared to March 2015 (90.8%)

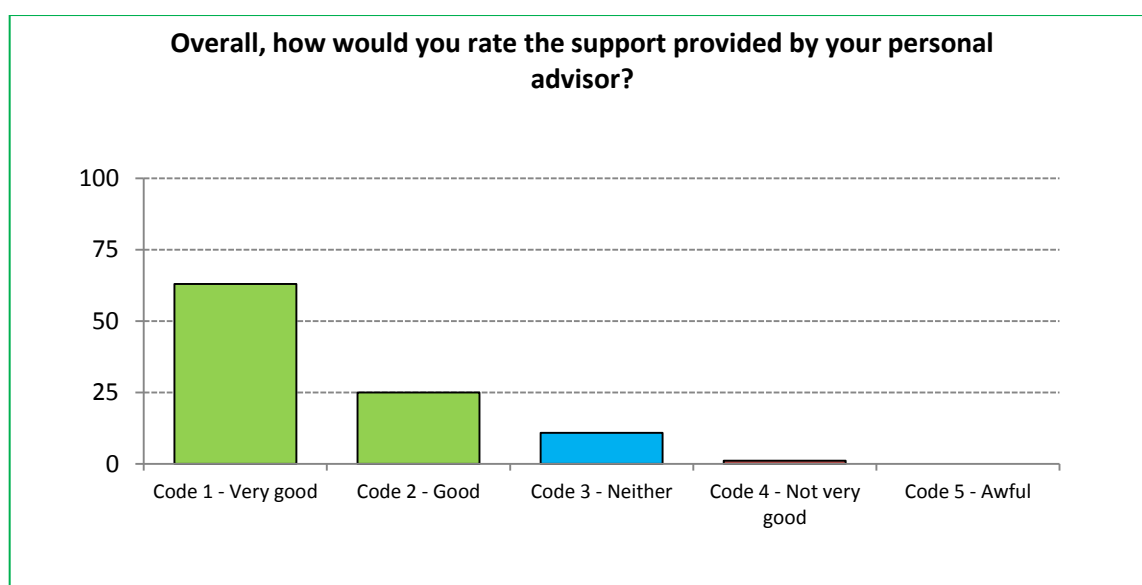
Involvement and participation of Young People

Young people’s engagement in democratic processes across Central Bedfordshire is strong. In the recent youth parliament:

- Across **11** schools a total of **5,104** students voted which was 65% of the 7840 ballots issued
- **46** candidates stood for election and **26** were elected with an almost 50/50 split with 12 young men and 14 young women
- We now have **26** new members of the Youth Parliament and **4** members of UK Youth Parliament who will represent their peers and communities for the next 2 years

Securing high quality Impartial Advice and Guidance

- **11** out of the 14 schools/academies approached have signed up to IAG minimum standards over the past 12 months. We are actively engaged with the remaining 3 schools/academies
- There were **909** intensive interventions made by 3 personal advisers who work with looked after children, young offenders and young people who are homeless and **1,503** interventions made by 4 personal advisors who work with young people with special education needs or disabilities
- In September 2015, **65.5%** of 16 and 17 year olds, who were looked after, young people who have offended or in hostel accommodation had agreed offers of learning
- A review of the effectiveness and efficiency of the current IAG offer by young people showed that 88% rated our support as good or very good and demonstrates the quality of service we provide to young people – please see an example of the feedback in the table below. Full results are available on request



Community Youth Support

- **80** young people (75% of those supported) received an accredited V Inspired award (V10, V30, V50 or V100) as a result of their volunteering
- Since October 2015, **467** young people from our most disadvantaged communities participated in targeted youth work and projects. Of these, 60% have reported a positive impact on their lives

- Of those young people who were NEET and supported into education, employment or training (EET) by our provider, 4YP, **71% remained in education, employment or training** 6 months following their intervention

Youth Offending Services

- There were 54 first time entrants (48 in 2014/15) into the Criminal Justice System from Central Bedfordshire, which is lower than regional, national and family group authorities.
- There has been an increase in remands (from 4 in 14/15 to 11) and custodial sentences (from 5 in 2014/15 to 7) relating to young people in Central Bedfordshire

Our Year in comments – highlights:

Young person working with 4YP – our IAG provider

‘I really enjoyed the traineeship and the work experience at a local pre-school. The pre-school have even offered me an apprenticeship; I am really happy and excited about it. I wanted to let you know and thank you for it, as without you I wouldn't have even got the traineeship and therefore wouldn't have been in this great position. A Big Thank You!’

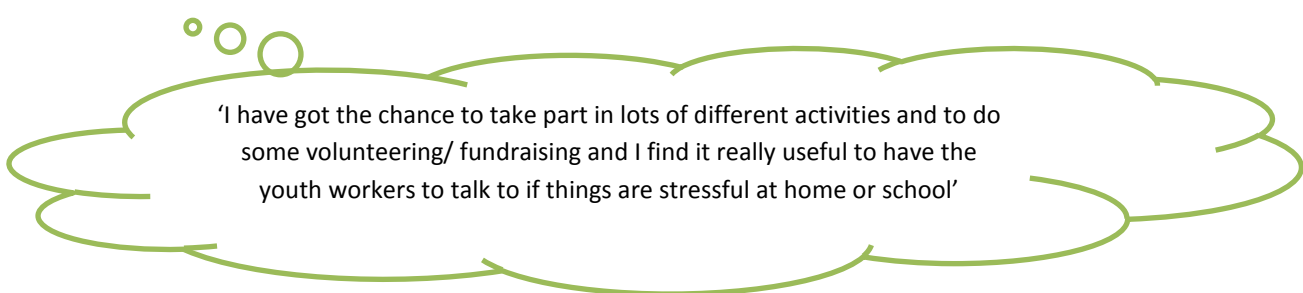
Multi-agency Audit of the Childs Experience – CSE – for Joint Targeted Area Inspection

‘There has been Good engagement with voluntary sector partners, e.g. a number of the young people are known to Brook advisory and have received sexual health advice and some attend youth projects; in one case the role of the youth project in supporting the young person has been crucial’

Head teacher in their evaluation of elections to youth parliament

‘An excellent opportunity to debate and for the whole school to be actively involved in politics. It engaged our more able pupils and surprisingly others that found their voice through the process! Would definitely recommend it’

Young person – Age 15 – Leighton Buzzard



'I have got the chance to take part in lots of different activities and to do some volunteering/ fundraising and I find it really useful to have the youth workers to talk to if things are stressful at home or school'

Our Impact – a case study:

Never giving up!

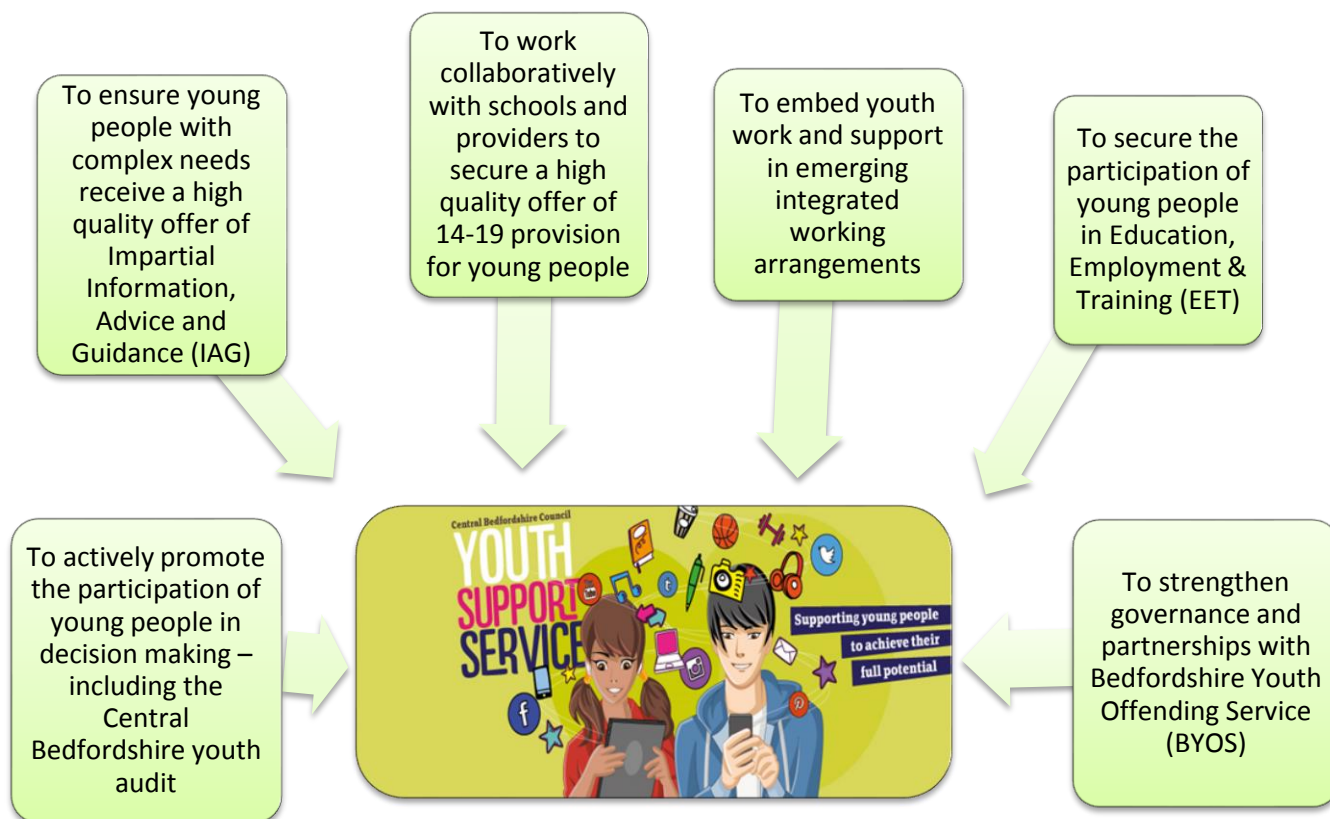
M is now 18 and a Care Leaver, after being in care for many years. She has lived in different places and with different carers, including out of county placements.

M currently lives independently in Central Bedfordshire. She completed Year 11 with no formal qualifications as she didn't take exams as expected. M had a number of health issues which affected her greatly – including the use of drugs. M was later referred to a mental health hospital where she was 'in and out' for months. M dropped out of college and was not in Education, Employment or Training for more than a year.

The YSS worked with M to explore her career options. With support, M has now completed a traineeship course run by the Academy of Social Work and Early Intervention at Central Bedfordshire Council, where she achieved a Cache Entry Level 3 Certificate in Social and Personal Development. M also had the opportunity to take an active part in work experience where she gained a lot of self confidence and employability skills like job search skills, CV skills and interview skills.

M used these skills to search and apply for Apprenticeship opportunities. M was immediately offered a job as an Apprentice nursery nurse at a nursery setting. M worked at this Nursery for a few months but made the choice to leave due to difficulties with public transport. M is still very positive about working and has found another suitable job in the area.

Our Priorities 2016/17 – looking ahead:



By delivering the priorities of the Youth Support Service (YSS), we will enable the council to meet its statutory responsibilities and local plans. This includes the Children Services transformation programme which over the next 4 years is seeking to deliver more integrated and cost effective services for children, young people and families. The YSS has been and will continue to be proactive in its contribution to this programme as we seek to improve outcomes for young people.

Our delivery will be supported by a detailed service plan. As part of this plan, we have a number of measures in place to help establish our success. These include:

- The number and % of young people in education, employment and training
- The number and % of young people who participate in the Make your Mark campaign
- The number of % of young people securing a positive outcome via targeted youth work
- The number and % of looked after children and care leavers who are in education, employment and training
- The number and % of schools signed up to the Central Bedfordshire careers education minimum standards

To support our priorities, we also have a number of cross-cutting themes that will inform our delivery for 2016/17:



The Youth Support Service will continue to monitor and review the services it both secures and directly delivers. This will include:

- Observations of practice by professionals and young people – including young commissioners and auditors
- Monitoring of performance against agreed measures, standards and outcomes – including regular feedback and involvement of all partners
- Independent safeguarding audits for externally provided services

Contact us...

If you have any questions regarding the Youth Support Service, please contact one of the following:

Youth Support Service – Manager

James Dove

by email: James.Dove@centralbedfordshire.gov.uk

by telephone: 0300 300 5145

For Community Youth Support and Quality Assurance

Jackie Squire

by telephone: 0300 300 6566

For Engagement and Tracking:

Tracey Smith

Direct Dial: 0300 300 4975

Youth Participation:

Lisa Wright

by telephone: 0300 300 5342

14-19 Partnerships:

Currently recruiting - TBC

by telephone: - TBC

Impartial Information, Advice and Guidance for Young People with Complex Needs:

Angela Perry -

by telephone: 0300 300 4484

On the web: www.centralbedfordshire.gov.uk/youthsupport

Write to Central Bedfordshire Council, Watling House, DC2A
High Street North, Dunstable, Bedfordshire LU6 1LF

Central
Bedfordshire

great
prospects

Central Bedfordshire in contact

Find out more

For more information about this publication, further copies, or a large print copy, get in touch.

Please recycle me!

When finished with, please put me in your recycling bin or bag.



www.centralbedfordshire.gov.uk/youthsupport



www.facebook.com/letstalkcentral



@CBYouthVoice



customers@centralbedfordshire.gov.uk



0300 300 8000