



## **Dunstable High Street**

Central Bedfordshire

### **Specifications for materials and street furniture**

**DRAFT**

B2269M06

27<sup>th</sup> October 2017



### Dunstable High Street

Project no: B2269M06  
Document title: Specifications for materials and street furniture  
Document No.: B2269M06-UD-Specifications Document\_Rev 1  
Revision: 1 – DRAFT  
Date: 27<sup>th</sup> October 2017  
Client name: Central Bedfordshire  
Project manager: Sanjay Patel  
Author: LM

Tower Bridge Court  
226 Tower Bridge Road  
London SE1 2UP  
United Kingdom  
T +44 (0)20 7403 3330  
F +44 (0)20 7939 1418  
[www.jacobs.com](http://www.jacobs.com)

© Copyright 2017 Jacobs U.K. Limited. The concepts and information contained in this document are the property of Jacobs. Use or copying of this document in whole or in part without the written permission of Jacobs constitutes an infringement of copyright.

Limitation: This report has been prepared on behalf of, and for the exclusive use of Jacobs' Client, and is subject to, and issued in accordance with, the provisions of the contract between Jacobs and the Client. Jacobs accepts no liability or responsibility whatsoever for, or in respect of, any use of, or reliance upon, this report by any third party.

Please note: Some of the images used in this document have been included as inspirational images only and have been sourced from the internet. The relevant websites have been quoted as references, however, if this document were to be published and circulated to a wider audience other than the core review group, individual permissions would need to be sought after from relevant web sources to avoid copyright infringement issues

### Document history and status

Revision	Date	Description	By	Review	Approved
00	27/10/2017	Draft for review and comment	LM	NV	JG

## 1. Hardscape Design Elements

### 1.1 Paving

#### 1.1.1 Paving A

Supplier: Marshalls

Product name/type: Saxon Textured Paving

Product colours: Natural

Finish: Textured

Size: 600 x 300 x 35

Base: Mortar bed and 10mm nominal mortar joint

Pattern: Stretcher Bond

Location: Footway

Web link: <https://www.marshalls.co.uk/commercial/assets/documents/product-specifications/paco06.pdf>



#### 1.1.2 Paving B

Supplier: CED

Product name/type: Granite Imperial Setts

Product colours: Silver Grey

Size: 92 x 92 x 60

Base: Mortar bed and 10mm nominal mortar joint

Pattern: Stretcher Bond

Location: Gateways

Web link: <http://www.ced.ltd.uk/products/silver-grey-granite-imperial-setts#1>



#### 1.1.3 Paving C

Supplier: CED

Product name/type: Granite Imperial Setts

Product colours: Silver Grey

Size: 100 x 200 x 50

Base: Mortar bed and 10mm nominal mortar joint

Pattern: Stretcher Bond

Location: Gateways

Web link: <http://www.ced.ltd.uk/products/silver-grey-granite-imperial-setts#1>



**1.1.4 Paving D**

Supplier: CED

Product name/type: Granite Straight Kerb

Product colours: Silver Grey

Size: 300 wide x 150 deep mm

Location: Gateways

Web link: <http://www.ced.ltd.uk/products/straight-kerb#1>



**1.1.5 Paving E**

Supplier: CED

Product name/type: Italian Porphyry Setts

Product colours: Purple, Grey and Orange

Finish: Riven top surface and cropped sides

Size: 60 x 80 mm

Base: Tgranite bedding and jointing aggregate with limestone dust

Pattern: Fanned

Location: Middle Row

Web link: <http://www.ced.ltd.uk/products/porphyry-setts#1>



**1.1.6 Paving F**

Supplier: Marshalls

Product name/type: Appleton York Stone

Product colours: Natural Stone

Size: 600 x 400

Base: Mortar bed and 10mm nominal mortar joint

Pattern: Stretcher Bond

Web link: <https://www.marshalls.co.uk/commercial/natural-stone/products/appleton-yorkstone-webfa092290>



**1.1.7 Paving G**

Supplier: Aggregate

Product name/type: British Standard Tactile

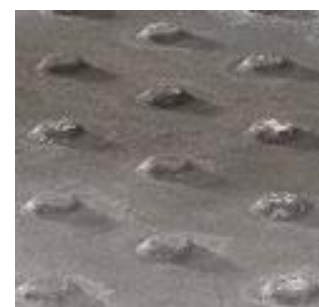
Product colours: Grey

Finish: Blister

Size: 400 x 400

Base: Mortar bed and 10mm nominal mortar joint

Pattern: Stretcher Bond



Web link: <https://www.marshalls.co.uk/commercial/natural-stone/products/appleton-yorkstone-webfa092290>



## **Seating**

### **1.1.8 Benches with armrests**

Manufacturer: Burri

Product reference: Burri 02

Amount: TBC

Frame: Solid Stainless Steel

Slats: Solid Stainless Steel (replaceable and recyclable hard rubber coating)

Fixture: Lock with bar lock

Weblink:

<http://www.burri.world/en/furniture/burri-02/bench-high-backrest>



### **1.1.9 Benches**

Manufacturer: Burri

Product reference: City Bench Type A

Amount: TBC

Frame: Solid Stainless Steel

Slats: Solid Stainless Steel (replaceable and recyclable hard rubber coating)

Fixture: Lock with bar lock

Weblink: <http://www.burri.world/en/furniture/city-bench-type/bench-backrest>



## **1.2 Litter Bin**

Manufacturer: Broxap

Product name: Pierhead Litter Bin

Product reference: BX 2311

Amount: TBC

Material:

Finish: Black Powder Galvanized Prime and Polyester Coating

Extra: Anti-Graffiti Coating, Corporate Laser Cut Logo

Colour: Black

Accessories/ Special requirements: Dunstable Council Logo

Website: <https://www.broxap.com/pierhead.html>



### 1.3 Tree Pits

#### 1.3.1 Tree Pits along Crossways

Manufacturer: Broxap

Product name: Sunburst Square Tree Grille

Amount: TBC

Colour: Black

Material: Steel

Dimensions: 1400 mm x 1400 mm

Base: Concrete

Weblink: <https://www.broxap.com/sunburst-tree-grille.html>



#### 1.3.2 Planters

Manufacturer: Broxap

Product name: Denton Planter

Amount: TBC

Colour: Black / Grey

Material: Concrete

Dimensions: 600 x 1800 mm

Weblink: <https://www.broxap.com/denton-planter.html>



#### 1.3.3 Planters

Manufacturer: IOTA

Product name: Granite Cube Planter

Amount: 4 (gateways)

Colour: Black / Grey

Material: Granite

Dimensions: 600 x 600

Weblink: <https://www.iotagarden.com/planters/granite-planters/granite-cube-planter/>







## **1.4 Signage**

### **1.4.1 Directional Signage**

Manufacturer: Broxap

Product name: Stockport Signage

Amount: TBC

Colour: Black

Extras: Finger posts

Web link: <https://www.broxap.com/stockport-column.html>



### **1.4.2 Directional Signage**

Manufacturer: River Meade

Product name: Made to Own Design

Amount: 4

Colour: Black

Extras: Lighting

Where: Gateways

Web link: <http://www.rivermeade.com/signs/architectural/34/public-realm>



## **1.5 Decoration**

### **1.5.1 Bunting**

Manufacturer: Northern Flags

Product name: PVC Bunting

Amount: 4 sets of 50m

Colour: Blue, Green, White

Extras: Dunstable logo

Web link: <http://www.northernflags.com/Catalogue/Indoor/Flags-and-Bunting/Bunting-2>



### **1.5.2 Archway**

Manufacturer: River Meade

Product name: Made to Own Design

Amount: 1

Colour: Black

Extras: Text

Web link: <http://www.rivermeade.com/signs/architectural/34/public-realm>



## **1.6 Lighting**

### **1.6.1 High Street**

Manufacturer: Philips

Product name: CitySoul gen2 LED

Amount: TBC

Description: LED luminaire

Weblink: <http://www.lighting.philips.com/main/prof/outdoor-luminaires/road-and-urban-lighting/road-and-urban-luminaires/citysoul-gen2-led/citysoul-gen2-led-large#p-image-4>



## 1.7 Cycle Amenities

### 1.7.1 Cycle racks

Manufacturer: Furnitubes

Product: College Cycle Stand

Amount: TBC

Material: Steel

Finish: Galvanised finish

Colour: Black

Fixture: Root Fixed

Web link: <https://www.furnitubes.com/street-furniture/college-cycle-stand>



## 2. Soft Landscape Design Elements

### 2.1 Trees

#### 2.1.1 Feature Tree in the Plaza

National Plant Specification:

Name: 'Liquidambar styraciflua'

Common Name: American sweetgum

Form: Standard

Age: Semi-mature

Girth: 20-25cm

Height: 450-550cm

Clear Stem:

Root Condition: RB (Root balled)



#### 2.1.2 Remaining trees

National Plant Specification:

Name: Acer Campestre 'Streetwise'

Common Name: Field Maple

Form: Extra-heavy standard

Age: Extra-heavy standard

Girth: 16-18cm

Height: 400-450cm

Clear Stem:

Root Condition: RB (Root balled)



## 2.2 Raingardens

### 2.2.1 Raingardens

Amount: 5/m<sup>2</sup> (area of all planting combined)

Name: Multi-stemmed *Betula albosinensis*

Common name: Birch



Name: *Cornus alba* 'Sibirica'

Common name: Red-barked dogwood



Name: *Iris sibirica*

Common name: Siberian Iris



Name: *Molinia caerulea arundinacea*

Common name: Tall Moor Grass





Name: Calamagrostis Karl Foerster

Common name: Karl Foerster Feather Reed Grass



Name: Polystichum setiferum

Common name: Soft field fern

