



Central Bedfordshire Multi-Agency Safeguarding Arrangements

**Central Bedfordshire
Safeguarding Children Board**



Children & Social Work Act 2017

- Removed requirement for Local Authorities to establish LSCBs
- There is now a duty placed upon 3 local partners - the Local Authority, the Police and the Clinical Commissioning Group to: *Work together to safeguard and promote the welfare of children in their area'*
- A new system has been put in place for local and national case reviews
- There is a new National Child Safeguarding Practice Review panel in place
- The responsibility for the Child Death Overview Panel (CDOP) has transferred to NHS England (taken forward locally by BCCG)
- Flexibility to work with other partners and across boundaries



Working Together 2018

- Sets out expectations for new safeguarding partnerships
- Roles and responsibilities
- Transition arrangements around Serious Case Reviews
- Arrangements for Child Safeguarding Practice Reviews going forward
- Timescales :
 - Publish Arrangements by 29th June 2019
 - Implement by 29th September – locally we have agreed 1st September 2019.



Central Bedfordshire Multi-Agency Safeguarding Arrangements

- Central Bedfordshire will retain its own Strategic Safeguarding Children Board which is independently chaired. It will also retain its own individual Case Review Group which will also be independently chaired.
- The Case Review Group will be responsible for taking forward the new Child Safeguarding Practice Reviews and linking in with the new National Safeguarding Practice Review Panel.
- Underneath the Strategic Board as much work as possible will be completed using a Pan Bedfordshire approach where appropriate.



Key Principles

- Safeguard the rights of all children consistently across the county but not losing the focus on the needs of Central Bedfordshire children and young people
- That all partners keep the child in focus when making decisions about their lives and work in partnership with them and their families.
- All partners to champion a continuous cycle of learning, to further develop service provision and delivery to support the child and their family.
- Duty to co-operate on all partners, particularly schools
- Independent challenge, authority and resource to fulfil both statutory functions & ensure learning
- That any change is not led by austerity or efficiencies but by measurable improvements in the safeguarding system that benefit children and families



Governance and Reporting

Governance:

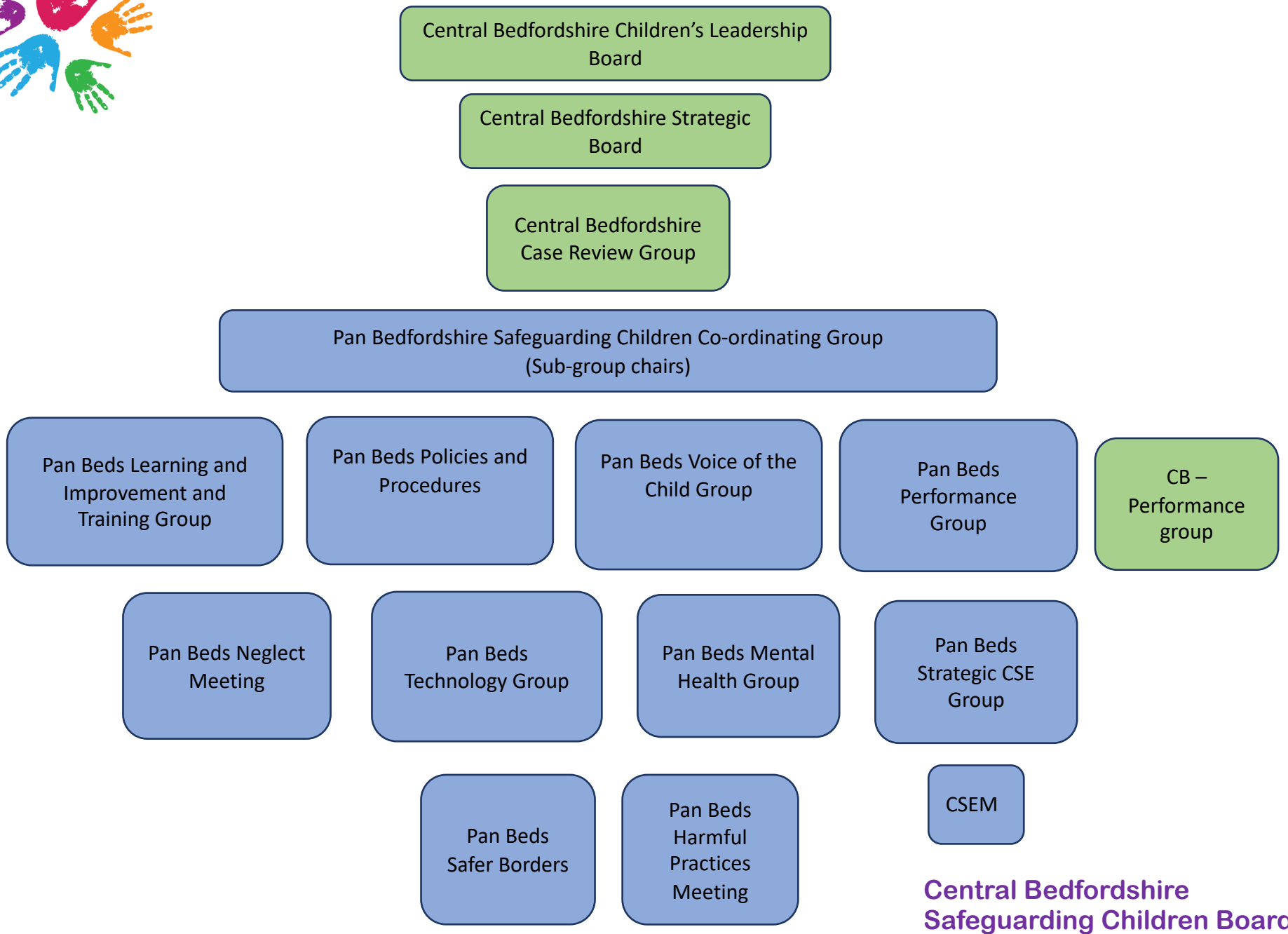
- The Governance for the multi-agency safeguarding arrangements sits with the 3 Multi-agency Safeguarding Partners and sits within their internal governance structures:
 - Local Authority – Executive Committee
 - Bedfordshire Clinical Commissioning Group – BCCG Governing Board
 - Bedfordshire Police – The PEEL Board

Reporting:

- In order to bring about transparency the Central Bedfordshire Multi-Agency Safeguarding Arrangements will publish a report at least every 12 months which sets out what has been done as a result of the arrangements and will include information on child safeguarding practice reviews.



Central Bedfordshire Multi-agency Safeguarding Arrangements Structure Chart:





Independent Scrutiny

- The Central Bedfordshire Multi-agency Safeguarding Arrangements will be chaired by an independent appointment.
- The Chief Executive of the Local Authority, drawing on the other multi-agency partners will hold the chair to account for the effective working of the Multi-Agency Safeguarding Arrangements.
- The Independent Chair is responsible for scrutinising and challenging local partners and considering how effectively the safeguarding arrangements are working for children, families and practitioners and how well are the safeguarding partners providing strong leadership.
- The Strategic Safeguarding Board will also consist of 2 lay members



Multi-Agency Partners

- The multi-agency partners who will be part of the new arrangements currently form part of the existing multi-agency safeguarding arrangements in Central Bedfordshire. The existing arrangements are working well with all partners committed to the safeguarding of children in Central Bedfordshire.
- The Central Bedfordshire Safeguarding Children Board will continue its relevant agencies on an annual basis as part of its Development Day.
- Membership consists of the Local Authority, the Police, Health Commissioners and Providers, CAFCASS, Probation Services, Youth Offending Service, Education representatives, Lay Members and representatives from the Voluntary sector.

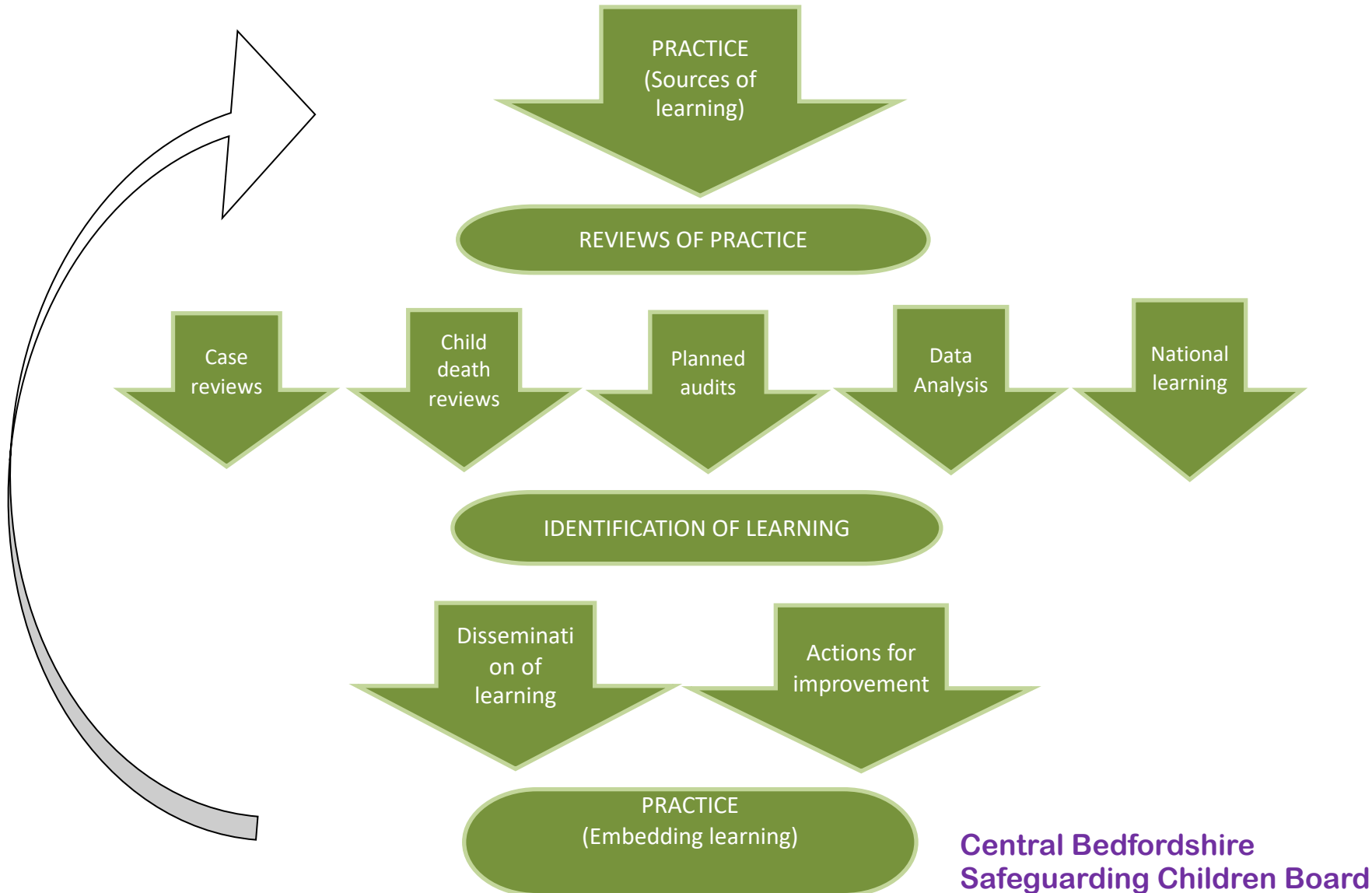


Links to Education Settings

- Within Central Bedfordshire there are 9 'School Clusters' – A representative from each school cluster will sit as a member of the Strategic Safeguarding Board along with a representative from the local college.
- As members of the Board they will be responsible for facilitating information between the board and their clusters in a 2-way process.
- Several of the clusters include schools which host early years facilities and therefore this also provides links to Early Years settings.
- Within the multi-agency safeguarding arrangements there are also several education representatives either from the Central Bedfordshire Council's School Improvement Team or from education settings who are members of several sub-groups.



Learning and Improvement Framework





Funding

- The Multi-agency Safeguarding Arrangements are funded by the multi-agency safeguarding partners on an annual basis, these arrangements currently remain the same as for the previous LSCB funding arrangements. The funding amounts are detailed with the attached report.



Links to other Partnerships

To be effective the Central Bedfordshire Multi-Agency Safeguarding arrangements for children will need to link into other local partnerships and boards such as:

- The Central Bedfordshire Health and Wellbeing Board
- The Central Bedfordshire and Bedford Borough Safeguarding Adult Board
- Bedfordshire Channel Panel
- Central Bedfordshire Community Safety Partnership
- Bedfordshire Local Family Justice Board
- Bedfordshire MAPPA Panels
- Bedfordshire Youth Justice Board
- Any local improvement boards

Within Central Bedfordshire there is a joint protocol in place whereby the chairs from Safeguarding Children's Board, Safeguarding Adults Board, Health and Wellbeing Board, Community Safety Partnership, Children's Leadership Board and the Youth Justice Board meet on a regular basis to discuss cross cutting themes/issues and priorities.