



Central Bedfordshire
Safeguarding Children Board

Central Bedfordshire

Multi-Agency Safeguarding Arrangements

Name of Arrangements:

Central Bedfordshire Safeguarding Children Board

Details of how partners will work together to improve the outcomes for children and families is contained within Appendix A (Terms of Reference for the Central Bedfordshire Safeguarding Children Strategic Board).

Geographical Area covered by arrangements:

Central Bedfordshire

Local Safeguarding Partners:

- Central Bedfordshire Council
- Bedfordshire Clinical Commissioning Group
- Bedfordshire Police

Principles of the Board:

Strong effective multi-agency safeguarding arrangements do not just happen, they demand an active commitment to collaboration and a common purpose.

Effective protection of children and the promotion of their well-being can only be secured through working together. Safeguarding arrangements for children and young people being built, sustained, tested and continuously improved.

The key principles of the safeguarding arrangements are:

- Safeguard the rights of all children consistently across the county but not losing the focus on the needs of Central Bedfordshire children and young people
- That all partners keep the child in focus when making decisions about their lives and work in partnership with them and their families.
- All partners to champion a continues cycle of learning, to further develop service provision and delivery to support the child and their family.
- Duty to co-operate on all partners, particularly schools
- Independent challenge, authority and resource to fulfil both statutory functions & ensure learning
- That any change is not led by austerity or efficiencies but by measurable improvements in the safeguarding system that benefit children and families

Governance and Reporting:**Governance:**

The Governance for the multi-agency safeguarding arrangements sits with the 3 Multi-agency Safeguarding Partners and sits within their internal governance structures:

Local Authority – Executive Committee

Bedfordshire Clinical Commissioning Group – BCCG Governing Board

Bedfordshire Police – The PEEL Board

Reporting:

In order to bring about transparency the Central Bedfordshire Multi-Agency Safeguarding Arrangements will publish a report at least every 12 months which sets out what has been done as a result of the arrangements and will include information on child safeguarding practice reviews.

The report will also include:

- Evidence of the impact the Multi-Agency Safeguarding Arrangements have had including information about training and the outcomes for children and families from early help to looked after children and care leavers.
- An analysis of any areas where there has been little or no evidence of progress on agreed priorities.
- A record of decisions and actions taken by the partners in the report's period (or planned to be taken) to implement the recommendations of any local and national child safeguarding practice reviews, including any resulting improvements.
- Ways in which partners have sought and utilised the feedback from children and families to inform their work and influence service provision.

The report will be published on the Safeguarding Board's website and a copy will also be sent to the National child Safeguarding Practice Review Panel and the What Works Centre for Children's Social Care within 7 working days of being published.

Arrangements for Independent Scrutiny:

The Central Bedfordshire Multi-agency Safeguarding Arrangements are chaired by an independent appointment. It has been agreed by the 3 multi-agency safeguarding partners that it is the responsibility of the Chief Executive (Head of Paid Service) of the Local Authority to appoint or remove the LSCB chair with the agreement of the other 2 safeguarding partners. The Chief Executive, drawing on the other multi-agency partners will hold the chair to account for the effective working of the Multi-Agency Safeguarding Arrangements.

The Independent Chair is responsible for scrutinising and challenging local partners and considering how effectively the safeguarding arrangements are working for children, families and practitioners and how well are the safeguarding partners providing strong leadership. The role is objective and acts a critical friend and promotes reflection and drives continuous improvement.

The Central Bedfordshire Case Review Group which is responsible for taking forward local Child Safeguarding Practice Reviews is also chaired by the independent chair.

The Pan Bedfordshire Co-ordinating Group which is responsible for overseeing the work of the Pan Bedfordshire Sub-Groups is chaired by one of the 3 Bedfordshire Strategic Board Independent Chairs rotated on an annual basis.

Arrangements for this post are compliant with Working Together 2018.

Details of Arrangements:

(Structure/Terms of Reference etc)

The Central Bedfordshire Multi-agency Safeguarding arrangements consist of a Central Bedfordshire Children's Leadership Board (which includes membership from the 3 safeguarding partners and

education), a Central Bedfordshire Safeguarding Children Strategic Board and a Central Bedfordshire only Case Review Group followed by a set of sub-groups which span across Bedfordshire and cover the areas of Central Bedfordshire, Bedford and Luton.

* It is noted that whilst the key agencies that make up the Central Bedfordshire Children's Leadership Board are replicated on the Central Bedfordshire Safeguarding Children Strategic Board, the individual members of each should be different, thereby providing an opportunity for appropriate challenge.

The arrangements consist of:

- Central Bedfordshire Children's Leadership Board
- An independently chaired Safeguarding Children Strategic Board for Central Bedfordshire
- A Central Bedfordshire Case Review Group
- A Pan Bedfordshire Co-ordinating Group (Group overseeing work of sub-groups)

A set of Core Groups which are the standing sub-groups of the Safeguarding Board arrangements, these groups are:

- A Pan Bedfordshire Policies and Procedure Group
- A Pan Bedfordshire Voice of the Child
- A Pan Bedfordshire Performance Group (with a Central Bedfordshire Performance Group feeding in to the Pan Bedfordshire Group)
- A Pan Bedfordshire Learning and improvement and Training Group

A set of sub-groups which relate to the priority areas of the Strategic Boards – these may change over time if the priorities change, these groups are:

- A Pan Bedfordshire Neglect Group
- A Pan Bedfordshire Technology Group
- A Pan Bedfordshire Strategic CSE and Missing Group
- A Pan Bedfordshire CSE and Missing Operational (CSEM)
- A Pan Bedfordshire Young People's Mental Health Group

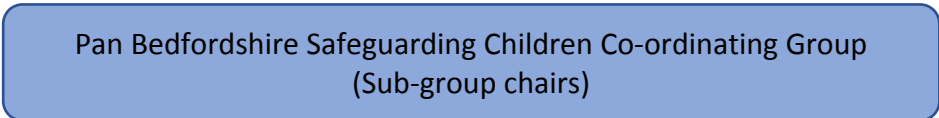
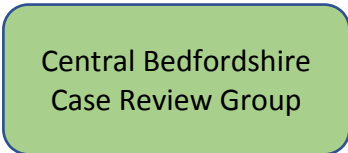
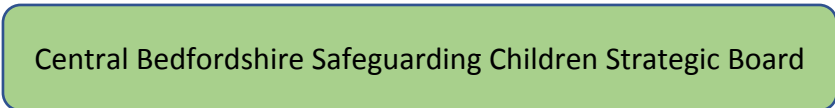
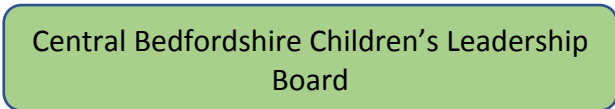
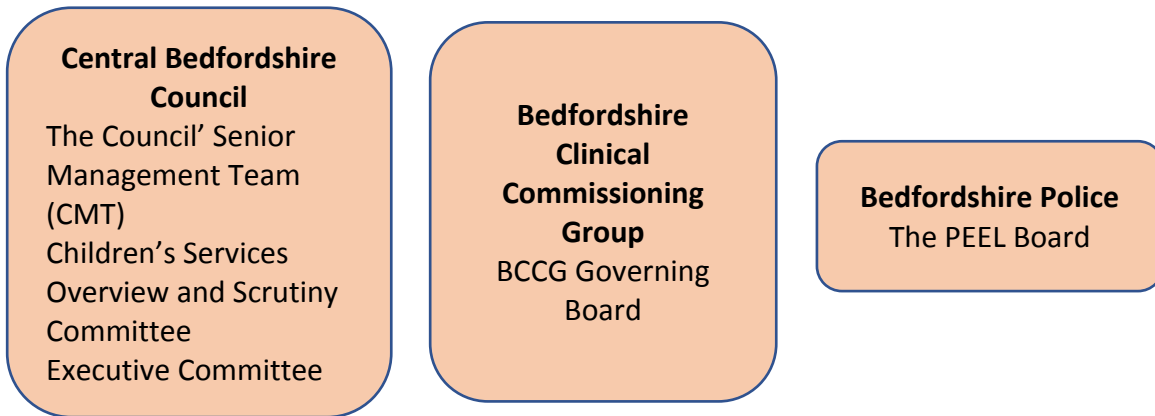
Other meetings – there are currently two other meetings which take place in addition to the above:

- Harmful Practices Meeting
- Safer Borders Meeting – this meeting is an update meeting with Border Force from Luton Airport

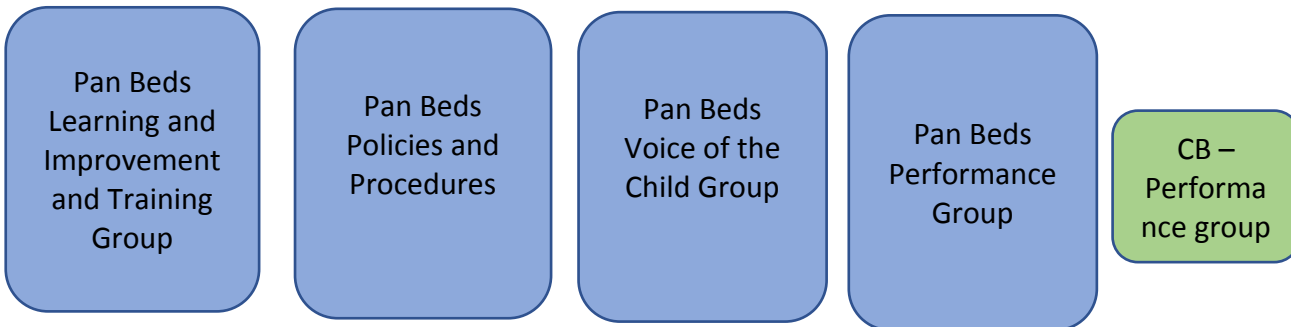
A structure chart is shown below:

The reporting/governance arrangements above the Central Bedfordshire Children's Leadership Board are as follows:

Central Bedfordshire Multi-agency Safeguarding Arrangements Structure Chart:



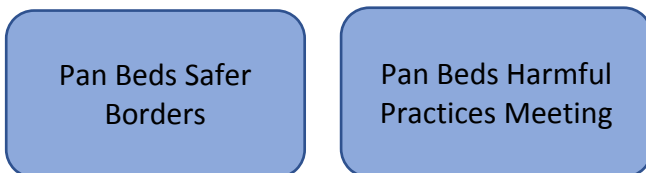
Core Groups



Priority Groups



Other Groups



Appendix A – Provides a copy of the Terms of Reference for the Central Bedfordshire Safeguarding Children Strategic Board.

Relevant Agencies:

(Including details about why they have been chosen)

- Independent Chair
- CAFCASS (Children and Family Courts Advisory and Support Service)
- Bedfordshire Clinical Commissioning Group
- Local Authority, including Adult Services, Children’s Services and Public Health
- Bedfordshire Youth Offending Service
- Bedfordshire Police
- Luton and Dunstable NHS Foundation Hospital
- Bedford Hospital NHS Trust
- BeNCH
- National Probation Service
- 2 lay members
- NHS England
- Education, including schools and the local college
- East London Foundation Trust
- Cambridge Community Services
- Representation from the Voluntary Sector (Voluntary Organisations for Children, young people & families, VOCypf and Central Bedfordshire Home-start)

The above relevant partners have been selected as they currently form part of the existing multi-agency safeguarding arrangements in Central Bedfordshire. The existing arrangements are working well with all partners committed to the safeguarding of children in Central Bedfordshire. The Central Bedfordshire Safeguarding Children Board will continue its relevant agencies on an annual basis as part of its Development Day.

Links to Early Years and Education Settings:

Within Central Bedfordshire there are 9 ‘School Clusters’ – A representative from each school cluster sit as a member of the Strategic Safeguarding Board along with a representative from the local college. As members of the Board they are responsible for facilitating information between the board and their clusters in a 2-way process. Several of the clusters include schools which host early years facilities and therefore this also provides links to Early Years settings.

Within the multi-agency safeguarding arrangements there are also several education representatives either from the Central Bedfordshire Council’s School Improvement Team or from education settings who are members of several sub-groups.

- Central Bedfordshire Safeguarding Children Strategic Board – A mixture of primary and secondary schools’ representatives taken from the 7 school clusters and a college representative
- Central Bedfordshire Case Review Group – School Improvement Team representative

- Pan Bedfordshire Co-ordinating Group – College representative
- Pan Bedfordshire Voice of the Child group – College Representative chairs the meeting with attendance from primary, secondary and special schools’ representatives
- Pan Bedfordshire Technology Group – Schools representative and School Improvement Team representative
- Pan Bedfordshire Harmful Practices meeting – School Improvement Team representative
- Pan Bedfordshire Learning and Improvement and Training Group – Schools and School Improvement Team representatives.

Local schools and colleges are also invited to take part in audits and case reviews where they are relevant.

The Safeguarding Children Board also communicates with schools via its own newsletter and also a local newsletter dedicated for schools.

Within Central Bedfordshire there are also 5 multi-agency locality meetings who have also identified a ‘Champion’ to be a contact between the locality meeting and the Safeguarding Board.

Links to Youth Custody and Residential Homes:

There are no Youth Custody establishments located in Central Bedfordshire (or Bedfordshire) however a number of young people from Central Bedfordshire are placed in Juvenile Secure Custody across England and Wales. The manager of Bedfordshire Youth Offending Service is a member of the Central Bedfordshire Multi-agency Safeguarding Arrangements.

In relation to residential homes, private children’s homes and 16+ units, the Assistant Director for Safeguarding and Early Help who is responsible for the Corporate Parenting/Looked After Children’s Service is a member of the Central Bedfordshire Multi-agency Safeguarding Arrangements.

Within Central Bedfordshire the Quality Assurance Manager organises regular forums throughout the year with the local residential homes and 16+ providers which the safeguarding arrangements/the board use as a link to local residential homes when needed.

Voice of Children and Families:

As part of the Central Bedfordshire Safeguarding Arrangements there is a Voice of the Child Sub-Group which is responsible for reviewing how local partners are hearing the voice of children and their families and how they are acting upon this. The group also carries out work directly with young people either through surveys or workshops to gain their views about the safeguarding services they receive. The group also carries out consultation activities usually in the form of focus groups with practitioners working with young people to gain their views on how systems and processes are working and their views on the services and support opportunities that are provided to young people and their families.

In addition to the above:

- All board reports are asked to consider the voice of the child.
- All audits consider the voice of the child(ren) and families
- Families are always contacted to participate in local case reviews

A child-centred approach to safeguarding

A child centred approach is fundamental to safeguarding and promoting the welfare of every child. A child centred approach means keeping the child in focus when making decisions about their lives and working in partnership with them & their families.

All practitioners should follow the principles of the Children Act 1989 and 2004 that states that the welfare of the child is paramount and that they are best looked after within their families, with their parents playing a full part in their lives, unless compulsory intervention in family life is necessary.

Children may be vulnerable to neglect and abuse or exploitation from within their family and from individuals they come across in their daily lives. These threats can take a variety of different forms, including: sexual, physical and emotional abuse; neglect; exploitation by criminal gangs and organised crime groups; trafficking; online abuse; sexual exploitation and the influences of extremism leading to radicalisation. Whatever the form of abuse or neglect, practitioners should put the needs of the child first when determining what action to take.

Children are clear about what they want from effective safeguarding systems;

- Everyone who works with children has a responsibility for keeping them safe. Everyone who comes into contact with them has a role to play in identifying concerns; sharing information and taking promote action.
- In order that organisations, agencies and practitioners collaborate effectively, it is vital that everyone works with child and families, including those who work with parents/carers, understand the role they should play and the role they should play and the role of other practitioners. They should be aware of, and comply with, this document and associated Pan Bedfordshire Interagency Procedures <http://bedfordscb.proceduresonline.com/>

There is no age limit on the right of the child or young person to express their views freely. All children and young people, including those of pre-school age, school age and those who have left full-time education, have a right to be heard in all matters affecting them, their views being given due weight in accordance with their age and maturity.

The voice and lived experiences of children and young people is a golden thread running through the work of the Central Bedfordshire Safeguarding Board and all its subgroups.

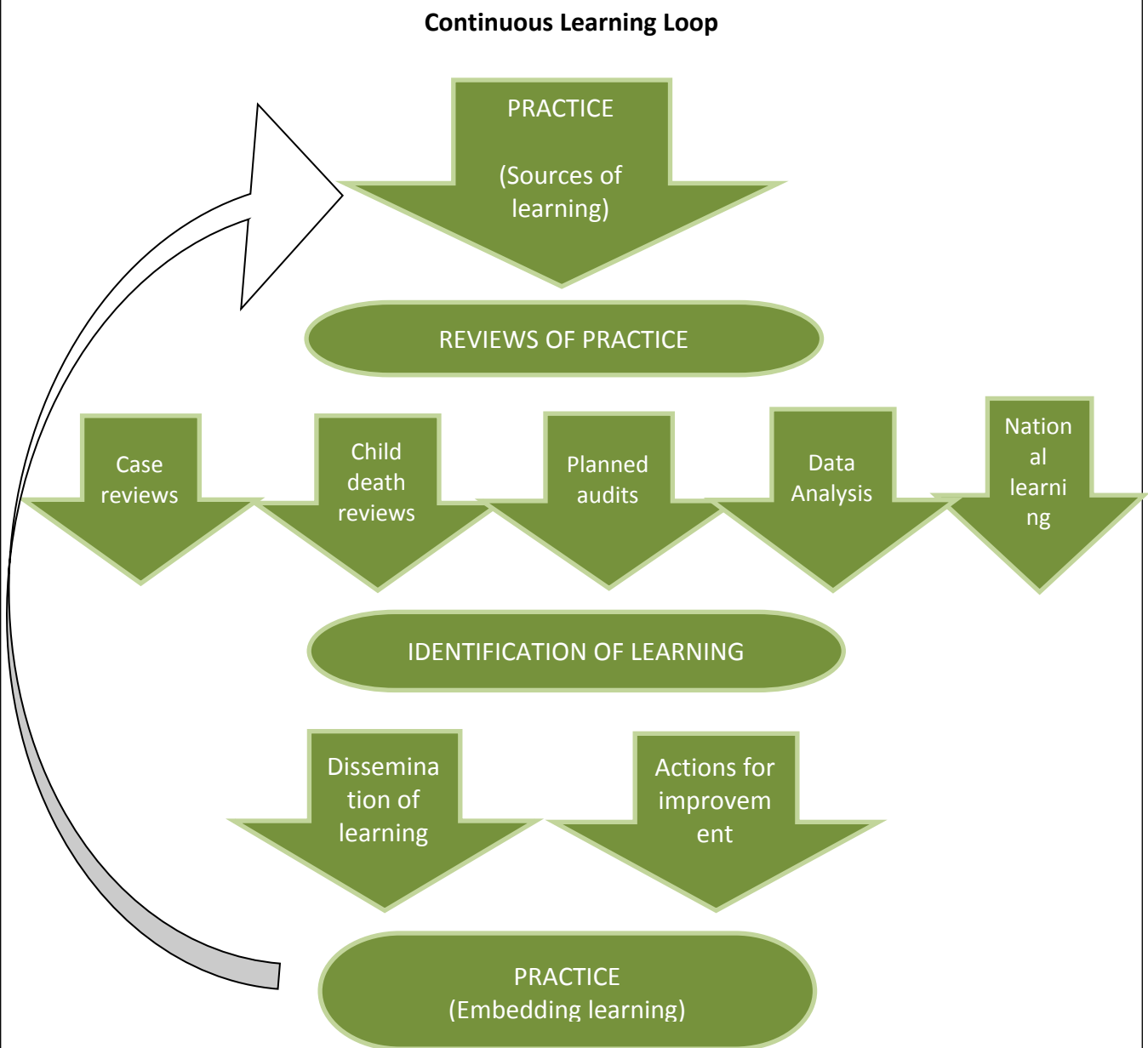
Professional Practice Guidance

All partners will continue to follow the existing Pan Bedfordshire Inter-Agency Procedures. These will underpin expected standardised process & practice across Bedfordshire. Adoption of these procedures will provide consistency to practitioners who are already familiar with these procedures. <http://bedfordscb.proceduresonline.com/>

These procedures will be refreshed in accordance with legislative and statutory guidance changes and national & local learning. This will be progressed through the work of the Pan Bedfordshire Policies & Procedures sub group.

Arrangements for disseminating and embedding Learning from Child Safeguarding Practice Reviews and Multi-Agency Audits:

The Central Bedfordshire Multi-agency Safeguarding Arrangements has in place a Learning and Improvement Framework to help set out a process for continuously improving practice via the learning loop. (The continuous learning loop is shown below)



Learning from the above activities (case reviews and audits) are disseminated using a range of methods including:

- Briefings and Conferences
- Multi-Agency Training Programme
- Newsletters and briefing documents
- Via the website
- Published Case Reviews
- Single agency training and briefings

[Link to the full Learning and Improvement Framework](#)

Arrangements for commissioning Child Safeguarding Practice Reviews:

(Process flowcharts etc)

Appendix B provides details of the Central Bedfordshire process for receiving serious incident notifications and considering and commissioning Child Safeguarding Practice Reviews.

Performance Monitoring Arrangements:

The Central Bedfordshire Safeguarding Arrangements have in place a multi-agency performance framework which is monitored and scrutinised by a Central Bedfordshire Performance Sub-Group on a quarterly basis. Information is then fed in to a Pan Bedfordshire Performance group for discussion and reported up to the Central Bedfordshire Strategic Board. In addition, performance indicators linked to themes/priority issues are also developed by the priority area sub-groups for discussion and scrutiny within the individual sub-groups.

Arrangements for Inter-Agency Training:

(Including commissioning, delivery, evaluation and monitoring the impact)

Multi-agency training across Bedfordshire is organised and commissioned via a Pan Bedfordshire Training Unit funded by the 3 Local area Multi-agency Safeguarding Arrangements.

Training:

A Pan Bedfordshire Training and Development Group are primarily responsible for;

- processes in place to identify the multi-agency training and development needs of staff and volunteers in Bedfordshire.
- building on the current joint training and development strategy
- ensuring that the content of the LSCB training programme is based on latest research/clinical evidence about 'what works' when working with children, young people and families.
- ensuring lessons from SCRs, other reviews and audits are disseminated with a view to embed into practice
- overseeing the commission arrangements and ensure relevant and competent trainers are utilised with a broader range of skills
- monitoring and evaluating the quality and impact of training on practice and take appropriate & timely action

Commissioning:

External expertise is commissioned where required to ensure the quality of learning/training. Expertise from across Bedfordshire services is also drawn upon where available to support the learning/training programme.

Evaluation and impact of training on practice:

We aim to provide each board with a robust approach to evaluating the learning/training delivered through the Pan Bedfordshire Training Unit, measuring both the quality of the training delivered and to evidence the impact on practice.

More information in relation to the training processes are contained in **Appendix C**

Arrangements for undertaking Multi-Agency Audits:

The Multi-agency Safeguarding Arrangements include a Pan Bedfordshire Learning and Improvement and training group which is responsible for following activities related to multi-agency audits:

- Delivering the Learning and Improvement Framework
- Developing and agreeing an annual programme of multi-agency audits
- Reviewing safeguarding related audits completed by single agencies
- Ensuring learning from Case Reviews and audits are fed in to training and policies and procedures
- Ensuring actions from multi-agency audits are implemented and where possible outcomes are measured.
- Sharing up to date knowledge of relevant research findings.

Funding Arrangements:

Agency	Amount
Central Bedfordshire Council	£82,037
Health	£54,830
Police	£19,992
National Probation Service	£840
BENCH	£840
CAFCASS	£550
Central Bedfordshire Council – Contingency funding	£22,210
Total	£181,298

Links to local Threshold Guidance:

(Include link to local threshold guidance)

Central Bedfordshire has in place multi-agency guidance related to the thresholds of needs for children and young people.

This guidance is designed for anyone working with children & young people and their families:

- To show the criteria for access to services for children based on a multi-agency needs/risk matrix
- To outline the four levels of prevention, need and risk, including safeguarding thresholds
- To set out the key principles for service provision to children, young people and families
- To know what action to take if they are worried about a child's welfare or safety
- To understand what will happen if a child is referred to children's social care
- To outline the threshold between Early Help and Children's Social Care, although in some circumstances both services will be involved.

[Link to thresholds document](#)

Dispute resolution:

Safeguarding partners will work together locally to resolve any disputes.

Below is link to the Pan Bedfordshire Escalation Process:

http://bedfordscb.proceduresonline.com/chapters/p_reolution_disagree.html

The local safeguarding partners will also be able to discuss and resolve local disputes through the Pan Bedfordshire Strategic Leaders of Children's Services Group.

If the Central Bedfordshire Safeguarding Children's Board receives any complaints that fall outside of the Pan Bedfordshire 'Complaints arising from Child Protection Conferences' procedure – then the complaint will be forwarded to the appropriate agency and copied to their complaints departments. A request will be made for the Safeguarding Board to be kept informed of the status of the complaint and the outcome when resolved.

Child Death Overview Process (CDOP):

As per Working Together 2018 our child death review partners are Bedford Borough Council, Central Bedfordshire Council, Luton Borough Council, Luton Clinical Commissioning group and Bedfordshire Clinical Commissioning group. The statutory requirements and responsibilities for child death review partners are set out in Working Together 2018 (page 95 -97).

Bedfordshire and Luton CDOP will produce an annual report for child death review partners on local patterns and trends in child deaths, any lessons learnt, and actions taken, and the effectiveness of the wider child death review process in order to assist child death review partners to prepare their report.

Bedfordshire and Luton CDOP in liaison with Milton Keynes CDOP will consider when writing their annual reports whether there are any common themes and learning from the year to undertake joint communication campaigns across Bedfordshire, Luton and Milton Keynes. This will reflect a wider footprint and the Integrated Care System (ICS) across Bedfordshire Luton and Milton Keynes (BLMK) which includes the BLMK Commissioning Collaborative.